

# LED Street Lamp GALAXXIS 2.0-45

**hansen**

## Technical data

Mains input voltage:	176-250 V
Power supply unit:	<b>hansen</b> Converter C350/180
Power rating:	45 W
Light source:	36 x 1.1 W Nichia high-power LEDs
LED current:	350 mA
Luminous flux:	3420 lm
Colour temperature:	~4000 K (standard) (3000 K and 5000 K available on request)

Dimensions (L x W x H):	630 x 240 x 135 mm
Weight:	6.5 kg

Lamp post top diameter:	Top mounting: 60/76 mm Side mounting: 42/60 mm
-------------------------	---

## Description

The LED street lamp **GALAXXIS 2.0-45** consists of an anodized aluminium base plate which holds the LED module on one side, and the power supply unit and the lamp post mounting bracket on the other side.

The LED module comprises 36 LEDs mounted on a printed circuit board. The LEDs are fitted with special lenses ensuring optimum illumination of the street and covered by an impact-resistant acrylic glass pane offering maximum protection.

The integrated power supply unit is pre-connected to a terminal block with strain relief allowing simple and fast connection of the lamp to the mains. The converter is **IP 67** rated and complies with protection class II. The system output can be reduced to 50% by switching off the control phase.

The galvanized universal mounting bracket allows both **top and side mounting** of the lamp to lamp posts with different diameters.

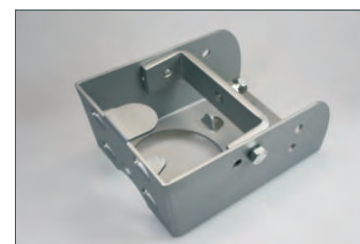
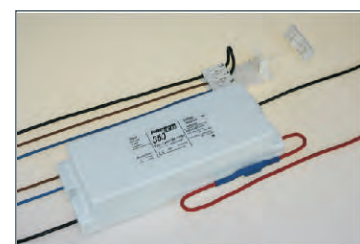
The lamp's **top cover** is made of metallic-grey polystyrene and can easily be open on the rear as required for side mounting.



The individual LEDs are insulated and protected by special lenses.



The top cover is designed to allow easy side mounting.



For further information please visit [www.galaxxis-streetlighting.com](http://www.galaxxis-streetlighting.com)

Technical modifications reserved. November 2011 Content is protected by copyright. Source: [www.hansen-led.com](http://www.hansen-led.com)

**hansen**  
technologie · elektronik · licht

**Hansen Neon GmbH**  
25855 Haselund, Germany  
[www.hansen-neon.com](http://www.hansen-neon.com)

**Contact:**  
**Hansen Neon GmbH** Global Distribution Office  
Tel. +45 75 45 22 11 • Fax +45 75 13 71 21  
E-mail: [info@hansen-neon.com](mailto:info@hansen-neon.com)